

## PR621 Women's Hospitality Waistcoat

### Description

A women's hospitality waistcoat with four button fastening and two functional watch pockets. This waistcoat is great for those who require a more smart and formal approach to service uniforms and looks great with a Premier shirt and tie.

### Product Features:

- Self-fabric back
- Two functional watch pockets
- Four button fastening

### Available In:

S, M, L, XL, 2XL

### Certifications:

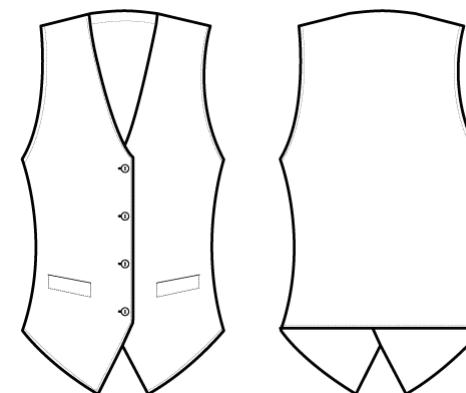


### Colours:

| Colour | Pantone | C | M | Y | K   |
|--------|---------|---|---|---|-----|
| Black  | Black c | 0 | 0 | 0 | 100 |

### Fabric:

65% Polyester, 35% Cotton Twill, 195gsm.



### Suggested Decoration:

Screen Print, Transfer Print, Embroidery

### Country of Origin:

China

### Commodity Code:

6211 43 1000

### Features:



### Wash Care:



### Carton Information:

| Sizes     | Carton | Pack | SKU's | Carton Weight | Carton Dimensions |
|-----------|--------|------|-------|---------------|-------------------|
| All Sizes | 24     | 6    | 5     | 10kg approx.  | 60cmx40cmx22cm    |

### Garment Sizes:

| Size           | 8  | 10 | 12  | 14  | 16  |
|----------------|----|----|-----|-----|-----|
| Bust to fit"   | 32 | 34 | 37  | 40  | 44  |
| Bust to fit cm | 80 | 88 | 96  | 104 | 112 |
| Bust actual cm | 88 | 96 | 104 | 112 | 120 |
| Call size      | S  | M  | L   | XL  | 2XL |
| Back length cm | 55 | 55 | 55  | 55  | 55  |