

## PR117 Long Sleeve Waterproof Salon Gown

### Description

A welcome addition to our waterproof collection, this long sleeve salon gown fits to the front and fastens neatly around the back of the neck with an adjustable tear release fastening. The long sleeves are finished with an elasticated cuff that allows ease of movement for clients.

### Product Features:

- Waterproof and bleach resistant for use in salons and barbers
- Elasticated cuffs
- Adjustable tear release fastening.

### Available In:

One Size

### Certifications:

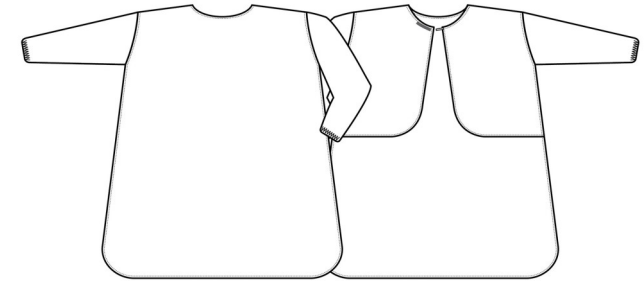


### Colours:

Colour	Pantone	C	M	Y	K
Black	Black c	0	0	0	100

### Fabric:

100% Polyester with Polyurethane coating, 110gsm.



### Suggested Decoration:

Screen Print, Transfer Print, Embroidery

### Country of Origin:

Bangladesh

### Commodity Code:

6211 43 1000

### Features:



### Wash Care:



### Carton Information:

Sizes	Carton	Pack	SKU's	Carton Weight	Carton Dimensions
One Size	36	6	1	8kg	60cmx40cmx20cm

### Garment Sizes:

108cm long